



Capacities 50 - 1000kg

Aluminium construction

Single point
600 x 600 mm platform

OIML R60 and NTEP
approved

Hazardous area approved
to FM & EEx ia IIC T4

IP67 Option available

Available with metric or
UNC threads

Model **1250** is a single point load cell designed for direct mounting of large platforms.

The 1250 is a cost-effective load cell for use in counting, weighing, bench, or floor scale products.

This high-accuracy load cell is approved to OIML R60, NTEP and other stringent approval standards. Suitable for use in hazardous environments, these load cells can be provided with European approval to EEx ia IIC T4 and are FM approved to Class I, II, III, Division I.

A special humidity-resistant protective coating assures long-term stability over the entire compensated temperature range.

The two additional sense wires, sample the bridge supply voltage at the load cell. Complete compensation of change in the lead wires resistance, due to temperature change and/or cable extension, is achieved by feeding this voltage into appropriate electronics.

1250

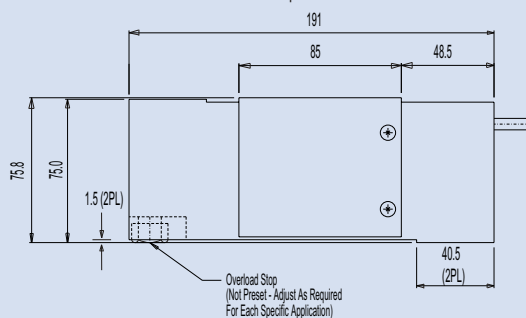
Model 1250 Aluminium High Capacity single point load cell

I250 SPECIFICATION

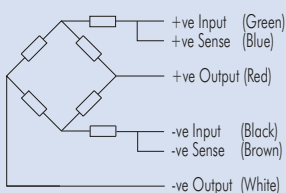
GRADE	E	C3**	C3.5***	UNITS
Rated Capacities	50, 75, 100, 150, 200, 250, 300, 500, 635, 1000****			kg
Rated Output	2.0±10%			mV/V
Total Error*	0.030	0.020	0.020	±% of Rated output
Zero Return after 30 mins	0.05	0.017	0.0142	±% of Applied Load
Temperature Effect :On Output	0.003	0.0010	0.0009	±% of Applied Load/°C
: On Zero	0.010	0.0023	0.0024	±% of Rated Output/°C
Eccentric Load Error	0.005	0.0033	0.0028	±% of Applied Load/cm
Zero Balance	10.0			±% of Rated Output
Temperature range :Operating	-30 to +70			°C
:Compensated	-10 to +40			°C
Safe Overload at centre point	200			% of Rated Capacity
Ultimate Overload at centre point	300			% of Rated Capacity
Excitation : Recommended	10			Volts AC or DC
: Maximum	15			Volts AC or DC
Input Impedance	415±15			Ohms
Output Impedance	350±3			Ohms
Insulation Impedance	>2000			MegaOhms
Deflection at Rated Capacity	<0.6			mm
Weight :	2.4			kg
Construction	Anodised Aluminium			
Environmental Protection	IP65 (IP67 option)			
Cable	3 Metres (Standard), 6 Wire, Polyurethane Jacket, Dual Floating Screen			
Platform Size	600 x 600			mm

*Total Error According to OIML R60 **Standard 50% utilisation-Other utilisation factors available on request. *** Standard 60% utilisation Note:635 and 1000 Kg are not OIML approved
****1000 Kg recommended for centre loading only Torque: 1.6Nm

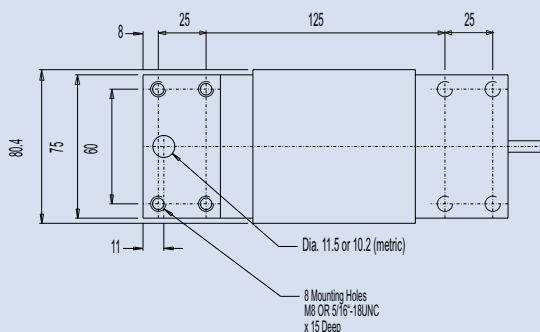
Outline Dimensions All Capacities



Wiring Schematic Diagram



BALANCED TEMPERATURE
COMPENSATION



All dimensions in mm

Due to Tedeá-Huntleigh's policy of continuous development, these specifications are subject to change without notice.

For larger platform sizes, high capacity load cells, designated models I320 and I330 are available from Tedeá-Huntleigh.

Constructed in aluminium and sealed to IP67, it is ideally suited for hanging scales, hopper and tank weighing.

For further details please contact Tedeá-Huntleigh or your local distributor, or visit our website at:

[Http://www.tedeá-huntleigh.com](http://www.tedeá-huntleigh.com)



Europe

Tedeá-Huntleigh Europe Ltd.
37 Portmanmoor Road,
Cardiff
CF24 5HE
United Kingdom.
Tel: +44(0)29-20460231
Fax: +44(0)29-20462173

International

Tedeá-Huntleigh International
5 Hazoran St,
New Industrial Zone
P.O. Box 8381, Netanya 42506,
Israel.
Tel: +972-9-863-8888
Fax: +972-9-863-8800

China

Beijing Tedeá-Huntleigh.
No. 16 Hong Da Bei Lu,
Da Xing County, Beijing Economic
& Technology Development Area,
Beijing 100176. China
Tel: +86-10-67881604~09
Fax: +86-10-67881576

Germany

Tedeá-Huntleigh GmbH.
Mümlingweg 18
D-64297
Darmstadt-Eberstadt,
Germany.
Tel: +49-6151-94460
Fax: +49-6151-944640

USA

Tedeá-Huntleigh Incorporated.
20630 Plummer Street,
Chatsworth,
CA 91311
USA.
Tel: +1-818-701-2700
Fax: +1-818-701-2799

France

SEEA sa.
16 Rue Francis Vovelle
28000 Chartres,
France.
Tel: +33-2-37-33-31-20
Fax: +33-2-37-33-31-29